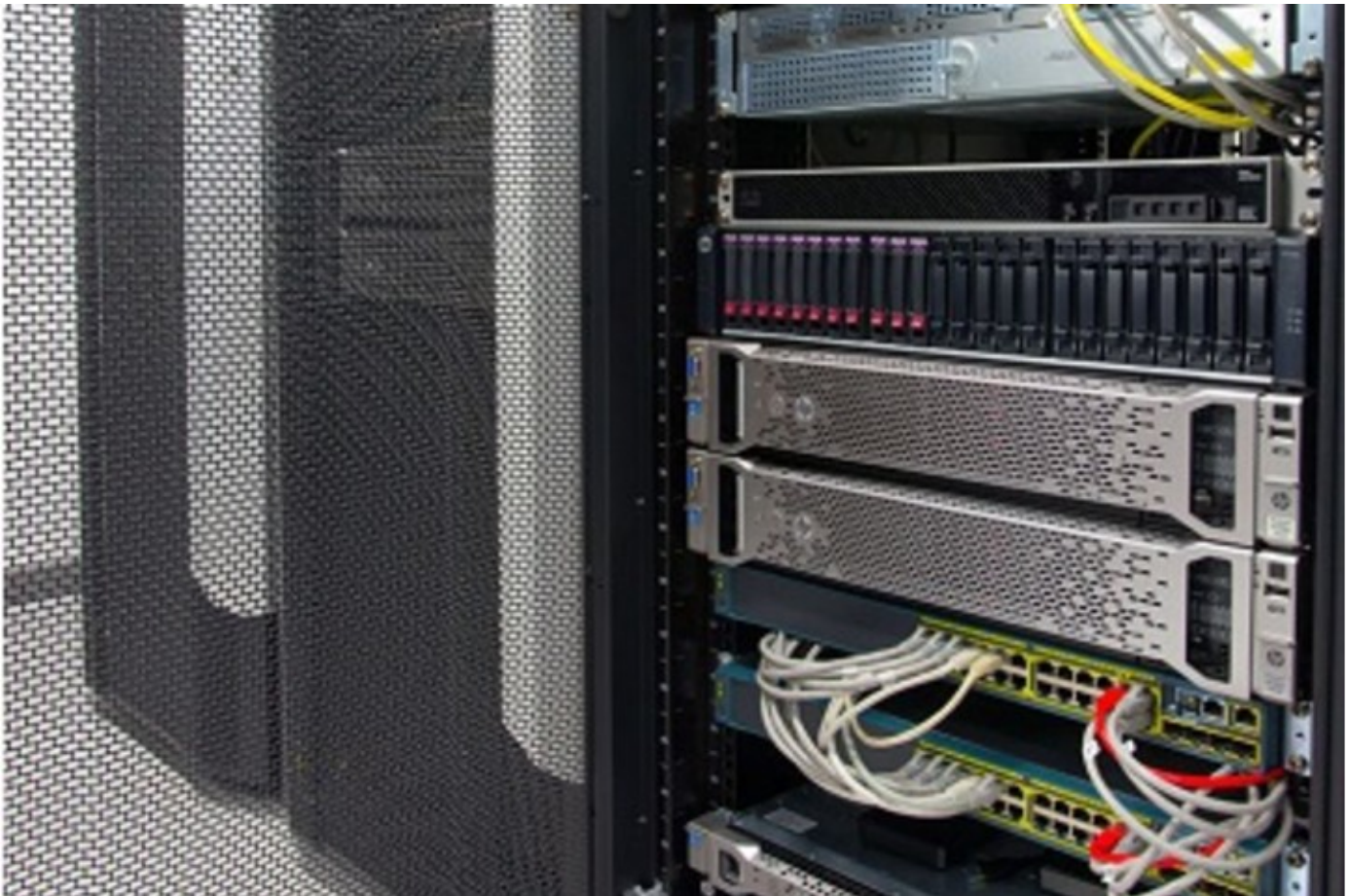


&#9776

- About Simplex
  - The Company
  - Quality and Information Security Policy
  - Why Cyprus
  - Why Simplex
  - Partners
  - Social Contribution
  - Careers
- Products & Services Consulting
  - Data Centre Audit
  - Data Centre Design
  - Procurement
  - Recruitment
  - Security
- Data Center
  - Colocation
  - Bandwidth
  - Web & Application Hosting
  - Data Backup
  - Disaster Recovery
  - Business Continuity
  - Remote Hands & Eyes
  - Managed Services
  - Virtual Office
  - Veeam Cloud Connect Backup
  - Veeam Cloud Connect Replication
- Web & Internet
  - Domain Services
  - Hosting
  - Online Payments
  - SSL Digital Certificates
  - Web Development & Solutions
  - Web Marketing
- Advanced Infrastructure
  - Backup & Availability
  - Data Centre Infrastructure
  - Desktop, Notebooks and Peripherals
  - Environmental Monitoring
  - Network Management & Monitoring
  - Networks, Communications & Security
  - Outsourcing & Support Services
  - Servers & Storage
  - Software & Licensing Solutions
  - Structured Cabling & Patching
- Data Center

- Clients
  - Customers
  - Success Stories
  - Website Portfolio
- Customer Services
- News
  - Press Releases
  - Articles
  - Press Kit
  - Newsletters
- Downloads
- Contact

## Cyprus Data Center



Recognizing the challenges that most organizations face today especially in regards of the cost for IT infrastructure, reliability and availability of network/bandwidth, hardware, power, security and in-house human expertise, in 2007 Simplex built its own data center, strategically located in Cyprus. Simplex currently operates the only carrier independent/neutral, mission-critical Data Centre in Cyprus.

### Facilities

Simplex's data center is located on the 4<sup>th</sup> (top) floor of a building in the heart of Limassol, the international business centre of Cyprus and features 176m<sup>2</sup> (approx. 1895 sq.ft.) of combined server

space and office space. The highest levels of availability become possible through the Data Centre's state-of-the-art facilities:

- Racks
- Cabling
- Network and bandwidth
- Power
- Fire detection and suppression
- CCTV (Closed Circuit Television)
- Access control
- Security breach alarm and motion sensors
- Environmental control
- Facility management
- Business continuity office space
- Staging area.

## Technical Expertise

In-house expertise extends your organization's reach and footprint without being necessary to invest in expensive and hard to obtain skilled engineers. Highly skilled engineers available to support your operations from design and building your solution to maintaining your systems to full productivity. Should a fault occur, the rapid response of our engineers is available on a 24/7 basis and within a guaranteed response time of two hours maximum.

For simple equipment fixes and tasks such as racking up your equipment or more complex installations, configuration and troubleshooting, we have the in-house skills to quickly, reliably and cost-effectively satisfy your requirements.

## Services

Having equipment housing and connectivity as core services, Simplex provides web hosting, colocation, application hosting and management, data backup and disaster recovery, business continuity, point of presence (POP), IT security consulting, remotely managed IT services and many other services to private and public organizations as well as service providers and telecoms operators who use the Data Centre as a POP or switching center. For a detailed list of Data Centre services see [here](#).

## Cost Savings

By using our facility, customers can save up to 100% compared to maintaining an in-house, proper server room.

## Unprecedented SLA

Simplex's world-class data centre, state-of-the-art infrastructure and technical expertise allow us to guarantee up to 99.99% availability through formal Service Level Agreement (SLA).

## Global Presence

Through a network of affiliated Data Centres across the U.S., Europe, Middle East and Asia, Simplex is able to fulfill any customer requirements for global presence.

